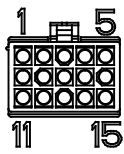


REVISIONS

REV	DESCRIPTION	DATE	APPROVED
A	INITIAL RELEASE ECO 7010	7/2/14	J KORDIK
B	ADD LABEL/SPEC CHG ECO 7060	9/15/14	J KORDIK
C	REVISE SPEC PER ECO 7205	5/8/15	J Kordik
D	ADD UL TO LABEL PER ECO 7330	10/12/15	J KORDIK
E	SPECS REVISED PER ECO 7510	10/12/15	J KORDIK
F	BREAK CONTACT 170360-1, 8434	3/10/20	LEO. L

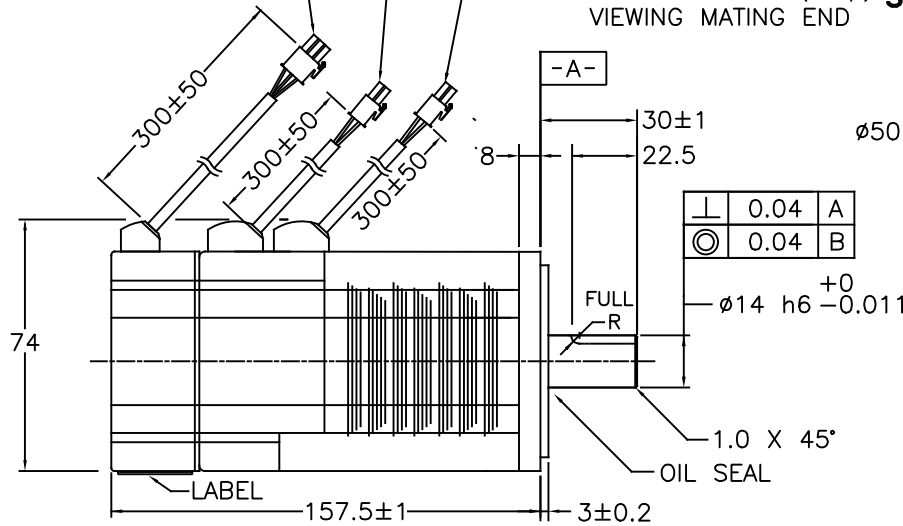
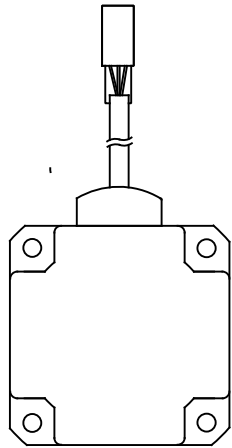
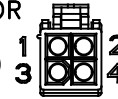


ENCODER CONNECTOR
CONNECTOR: AMP 172171-1
770835-1 contacts (strip)
VIEWING MATING END

BRAKE CONNECTOR
CONNECTOR: AMP 172165-1
170360-1 contacts (strip)
VIEWING MATING END

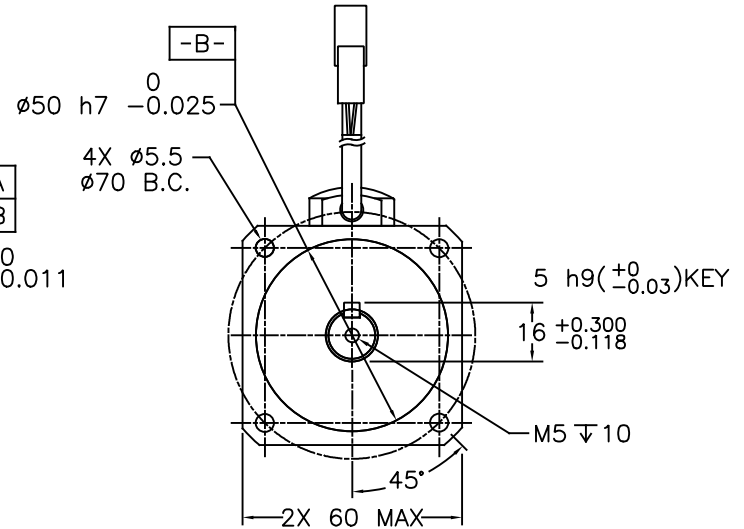


MOTOR POWER CONNECTOR
CONNECTOR: AMP 172167-1
170360-1 contacts (strip)
VIEWING MATING END



⊥	0.04	A
⊙	0.04	B
		+0 -0.011

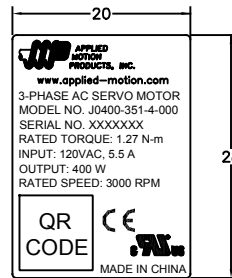
ø14 h6



ENCODER CONNECTION TABLE		
PIN	LEAD COLOR	SIGNAL
1	RED	+5V
2	BLACK	GROUND
3	BROWN	U+
4	BROWN/BLACK	U-
5	GRAY	V+
6	GRAY/BLACK	V-
7	WHITE	W+
8	WHITE/BLACK	W-
9	BLUE/BLACK	A+
10	BLUE	A-
11	GREEN	B+
12	GREEN/BLACK	B-
13	YELLOW	Z+
14	YELLOW/BLACK	Z-
15	SHIELD	SHIELD

MOTOR CONNECTION TABLE		
PIN	LEAD COLOR	SIGNAL
1	RED	PHASE U
2	YELLOW	PHASE V
3	BLUE	PHASE W
4	YELLOW/GREEN	GROUND

BRAKE CONNECTION TABLE		
PIN	LEAD COLOR	SIGNAL
1	RED	BRAKE
2	BLACK	BRAKE



R 1.5
4PLCS

NOTES: UNLESS OTHERWISE SPECIFIED

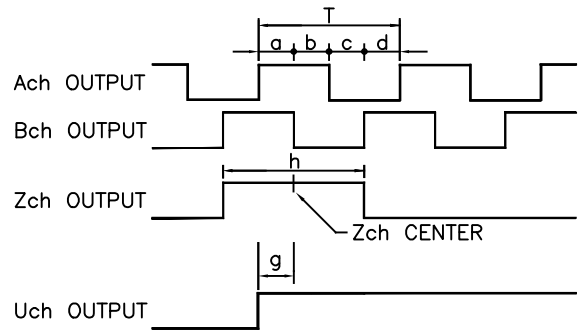
- A SHAFT SEAL IS SHIPPED WITH MOTOR, BUT NOT INSTALLED.
- TIMING LOGIC IS CCW AS VIEWED FROM FRONT SHAFT.
- MOTOR IS IP65, EXCEPT SHAFT OPENING AND CABLE CONNECTOR.
- INSTALL INDOORS, AWAY FROM DIRECT SUNLIGHT, FLAMMABLE AND CORROSIVE GASES.
- 1000M MAX ALTITUDE.
- BRAKE RELEASES WHILE ENERGIZED, DO NOT ENGAGE WHILE MOTOR IS ROTATING. BRAKE POWER IS NOT POLARITY SENSITIVE. THIS IS A HOLDING BRAKE.

TOLERANCES		THIRD ANGLE PROJECTION		APPLIED MOTION PRODUCTS, INC.	
DECIMALS: MM (INCH)				AC SERVO MOTOR WITH ENCODER AND BRAKE	
X.XXX = ±0.013 (.005)					
X.XX = ±0.25 (.01)		APPROVALS	DATE	B	DWG NO. J0400-351-4-000
X.X = ±2.5 (0.1)		DRAWN R.JONEZ	5/22/14		
ANGLES:		CHECKED			
MACH. = ±.5°		APPROVED			
CHAM. = ±5°					
COMPUTER DATA BASE DRAWING				SCALE: NONE	SHEET 1 OF 2

AC SERVOMOTOR SPECIFICATION – PERMANENT MAGNET 8 POLES		
INPUT POWER SUPPLY	VAC	120
RATED OUTPUT	W	400
VOLTAGE CONSTANT	V(rms)/K(rpm)±10%	13.8
RATED WINDING CURRENT	A (rms)	5.7
PEAK WINDING CURRENT	A (rms)	17.1
WINDING RESISTANCE	V ±10%@20°C	0.85 LINE-TO-LINE
WINDING INDUCTANCE	mH ±20%	2.9 LINE-TO-LINE
RATED TORQUE	Nm(kgf-cm)	1.27(12.95)
PEAK TORQUE	Nm(kgf-cm)	3.8(38.75)
TORQUE CONSTANT	Nm/A(rms)±10%	0.222
RATED SPEED	rpm	3000
MAXIMUM SPEED	rpm	6000
WEIGHT W/ ENCODER & BRAKE	kg(lbs)	1.9(4.2)
INSULATION CLASS		B 130°C
ENCODER RESOLUTION		2500 LINES/REV.
SHAFT LOAD – AXIAL	N(lbs)(MAX)	70(15)
SHAFT LOAD – RADIAL	N(lbs)(MAX)	240(54)
MOTOR RATING	REF NOTE 3	IP65
AMBIENT TEMPERATURE	OPERATING	0 TO 40°C
AMBIENT TEMPERATURE	STORAGE	-20 TO 80°C
AMBIENT HUMIDITY MAX		85%
INERTIA – W/ ENC, BRAKE	kg*m ²	0.326 X 10 ⁻⁴

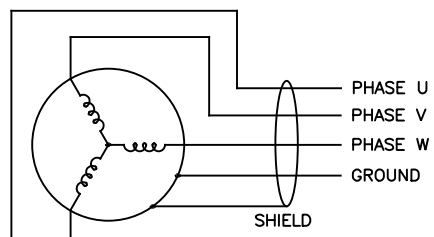
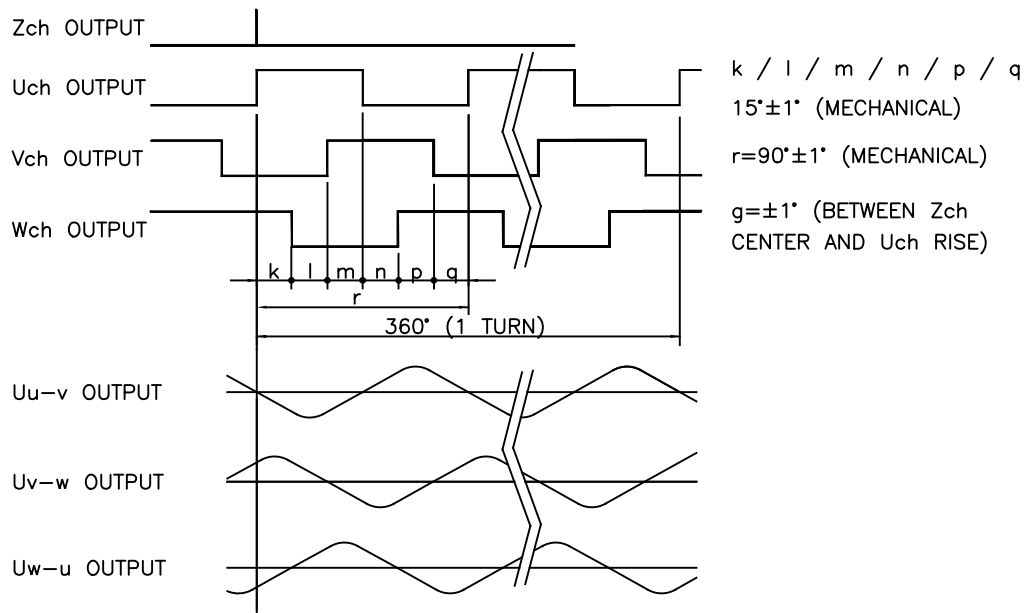
BRAKE SPECIFICATIONS:	
RATED VOLTAGE	24VDC
RATED CURRENT	0.38A
RELEASE VOLTAGE	18.5 VDC MAX (at 20°C)
STATIC FRICTION TORQUE	2 Nm
ENGAGE TIME	AT NOMINAL AIR GAP (@20°C) <25ms (NEW) FULL RANGE MAX AIR GAP <100ms (WORST COND)
RELEASE TIME	WITHOUT DIODE: <25ms (E-STOP) WITH DIODE: <200ms (NORMAL STOP)

TIMING LOGIC / ENCODER SIGNALS



$T = \frac{360 \text{ DEGREES}}{2500C/T}$
 $a, b, c, d = T/4 \pm T/8$
 $h = T \pm T/2$

TIMING LOGIC / ENCODER SIGNALS
(NOT TO SAME SCALE AS OTHER DETAIL)



CONTRACT NO.					
APPROVALS	DATE				
DRAWN R. JONEZ	5/22/14	SERVO MOTOR SPECIFICATIONS			
CHECKED					
APPROVED		B	FSCM NO.	DWG NO. J0400-351-4-000	REV F
APPROVED		SCALE: NONE			SHEET 2 OF 2