

SWM24-SF/QF Quick Setup Guide

Requirements

To begin, make sure you have the following equipment:

- A 12-70V DC power supply.
- A personal computer running Microsoft Windows 98, 2000, ME, NT, XP, Vista or 7/8/10/11.
- *ST Configurator™* software (available at www.applied-motion.com/products/software).
- A 3004-277-5M power cable, 3004-290-5M I/O cable, or a 3004-278-5M RS-232 programming cable as needed.
 - **NOTE: Cables are NOT included and must be purchased separately.**
- For more detailed information, please download and read the *SWM24 Hardware Manual*, available at www.applied-motion.com/support/manuals.

Step 1

(DO NOT apply power until all connections to the drive have been made.)

- Download and install the *ST Configurator™* software.
- Launch the software by clicking: Start / Programs / Applied Motion Products / ST Configurator
- Select the correct COM port using the drop down list
- Connect the drive to your PC using the RS-232 programming cable

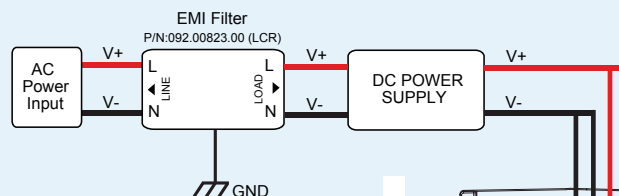
Step 2

Wire the drive to the DC power source.

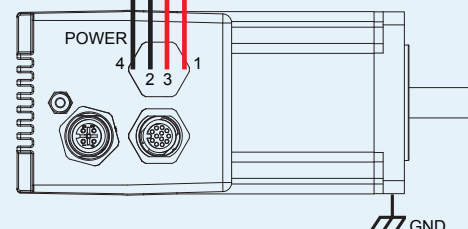
(Do not apply power until Step 3)

Note - the SWM24 accepts DC voltages from 12-70V. If using an external fuse, we recommend a 5 amp fast acting fuse.
(See the *SWM24 Hardware Manual* for more information about power supply and fuse selection.)

Connect I/O, if required by your application. A 3004-290-5M cable will be required.
(See the *SWM24 Hardware Manual* for more information about wiring I/O to the SWM24.)

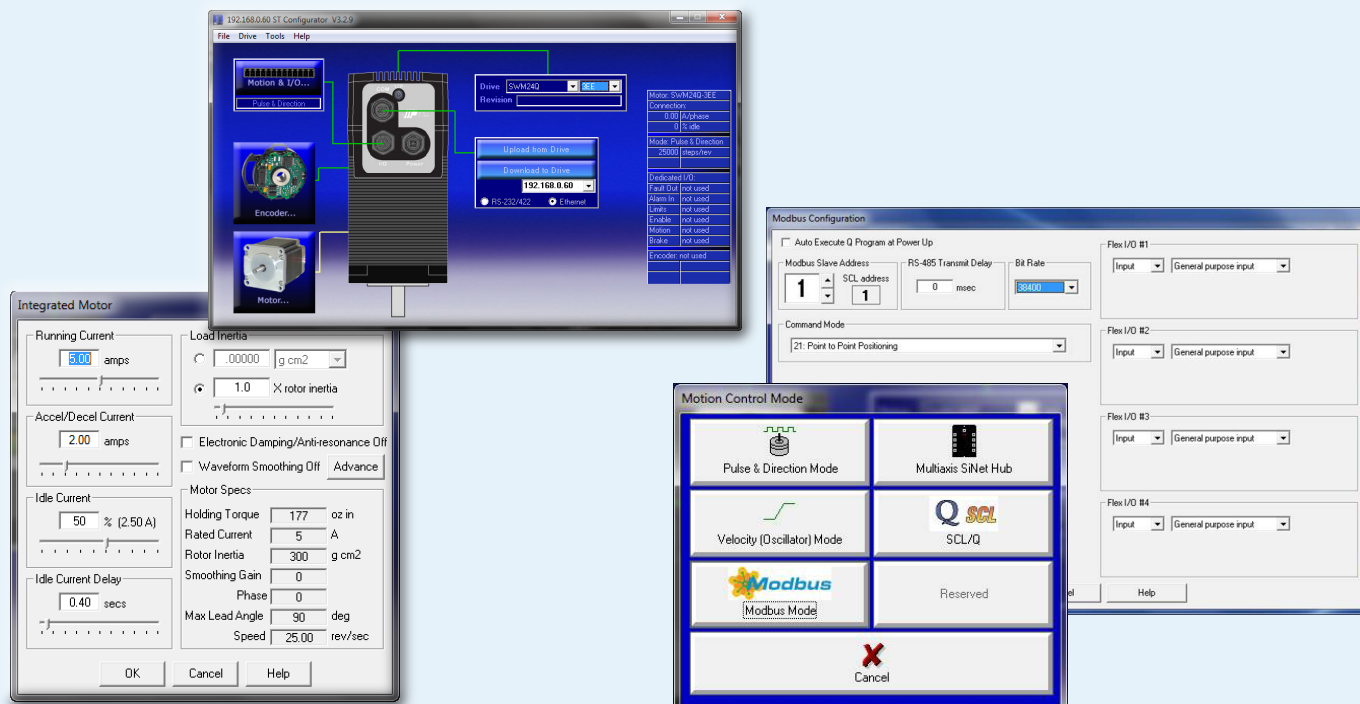


CONNECTION CHART		
PIN	SIGNAL	WIRE COLOR
1	DC +	BRN
2	DC -	WHT
3	DC +	BLU
4	DC -	BLK
METAL HOUSING	FRAME GND & SHIELD	SHIELD



Step 3

- Apply power to the drive. The drive model and firmware revision should be automatically displayed. If they are not, check the com port setting.
- Follow the configuration instructions in the *ST Configurator™* help screens.
- The *ST Configurator™* software can be used to set up your drive to operate in several different modes including: Pulse & Direction, Analog Velocity, and SCL.
- ST Configurator™* includes a self test option (under the Drive menu) to verify that the STM and power supply are correctly wired and configured.



If you have any questions or comments, please call Applied Motion Products Customer Support: (800) 525-1609, or visit us online at applied-motion.com.



18645 Madrone Pkwy, Morgan Hill, CA 95037
Tel: 800-525-1609 | applied-motion.com