

# ST5/10-Si Quick Setup Guide

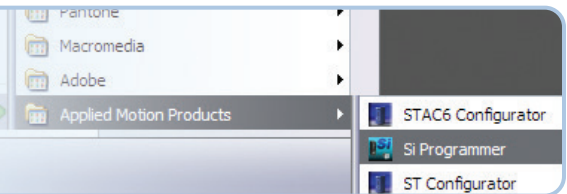
## Requirements

To begin, make sure you have the following equipment:

- A compatible stepper motor.
- A small flat blade screwdriver for tightening the connectors (included).
- A personal computer running Microsoft Windows 95, 98, NT, Me, 2000, XP, Vista, 7/8/10/11.
- *Si Programmer*<sup>™</sup> software, available at: <http://www.applied-motion.com>
- An Applied Motion programming cable (included).
- For more detailed information, please download and read the *ST5/10-QSiC Hardware Manual*, available at [www.applied-motion.com/support/manuals](http://www.applied-motion.com/support/manuals).

## Step 1

- Download and install the *Si Programmer*<sup>™</sup> software.
- Launch the software by clicking:  
Start / Programs / Applied Motion Products / Si Programmer
- Connect the drive to your PC using the appropriate programming cable.



## Step 2

**Warning - If you are using a non-Applied Motion motor, do not connect the motor until after you have configured the drive for your motor. Refer to Step 5.**

- Wire the drive to the DC power source.  
(do not apply power until all connections to the drive have been made)

Note, the ST5-Si accepts DC voltages from 24-48V, while the ST10-Si accepts DC voltages from 24-80V.

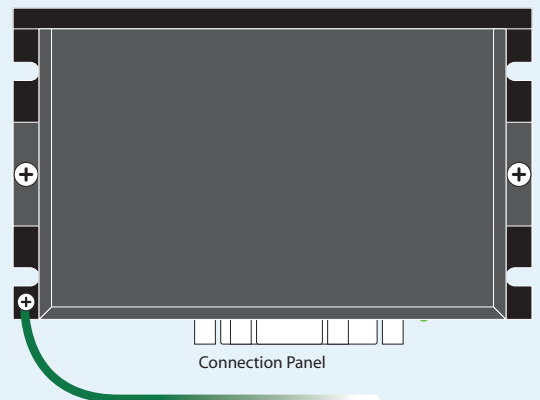
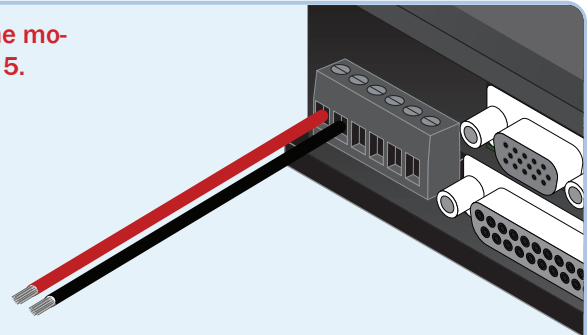
- Ensure a proper earth ground connection by using the screw on the left side of the chassis.

If using an external fuse, we recommend the following:

**ST5-Si:** 7 amp fuse, fast acting.

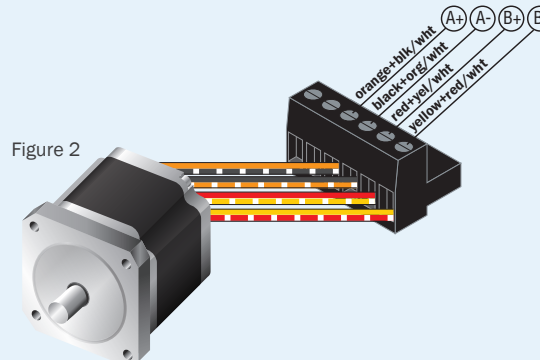
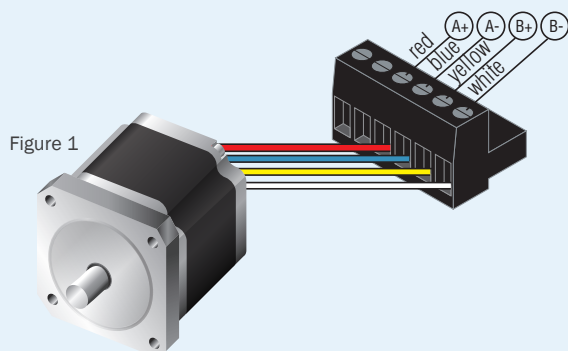
**ST10-Si:** 7 amp fuse, fast acting.

See the ST5/10-QSiC Hardware Manual for more information about power supply and fuse selection.



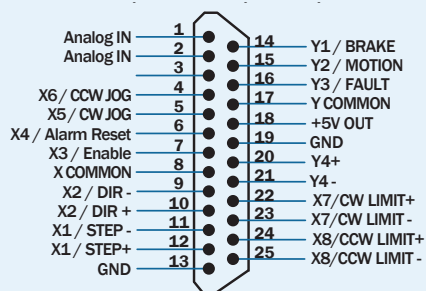
## Step 3

Connect the drive to the motor. Four lead motors can be connected in only one way, as shown in Figure 1. We recommend that eight lead motors be connected in parallel, as shown in Figure 2. If using a non-Applied Motion Products motor, please refer to your motor specs for wiring information.

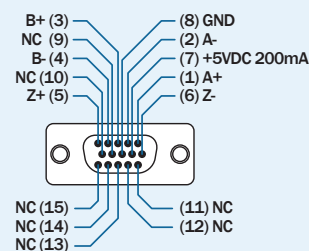


## Step 4

### a) Connect the I/O



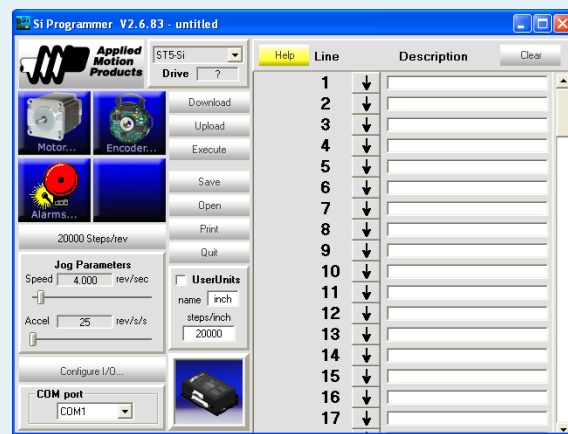
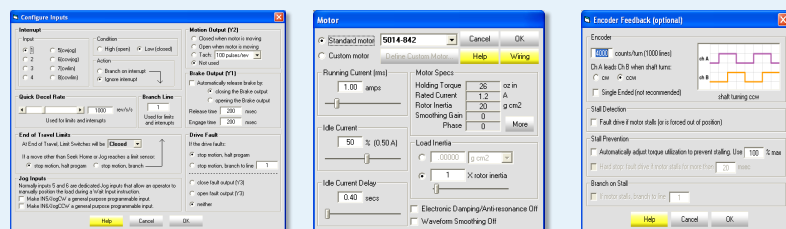
### b) Connect the Encoder (optional)



## Step 5

### a) Apply power to the drive.

### b) The Si Programmer™ software can be used to configure and program the drive for operation. Once an Si program has been constructed and downloaded to the drive, the program can be executed stand-alone at power-up or from an external trigger.



If you have any questions or comments, please call Applied Motion Products Customer Support: (800) 525-1609, or visit us online: [www.applied-motion.com](http://www.applied-motion.com).



18645 Madrone Pkwy.  
Morgan Hill, CA 95037  
Tel: 800-525-1609  
[www.applied-motion.com](http://www.applied-motion.com)